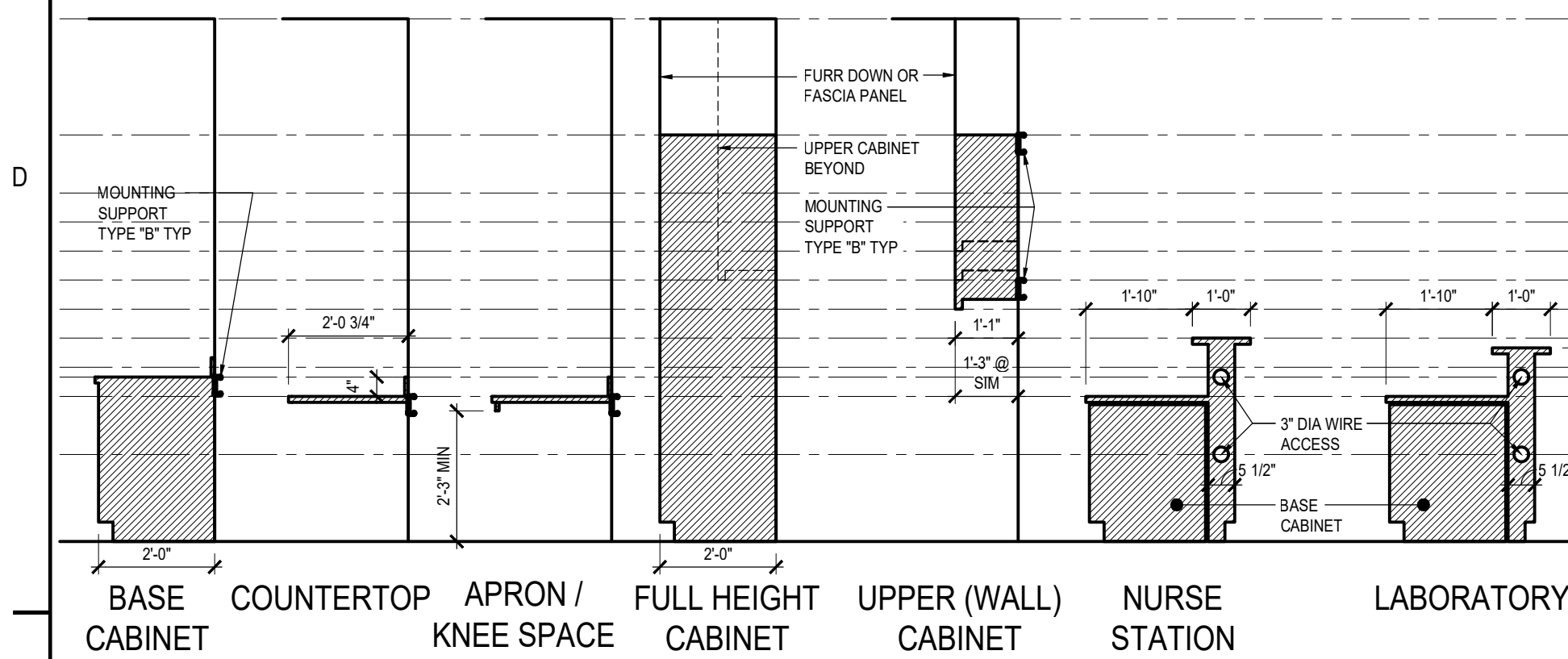


U:\22706059\dwg\working_files\04_architecture\01_cad\01_sheets\0750
2025.10.15 10:32:15 AM

TYPICAL CABINET DIMENSIONS

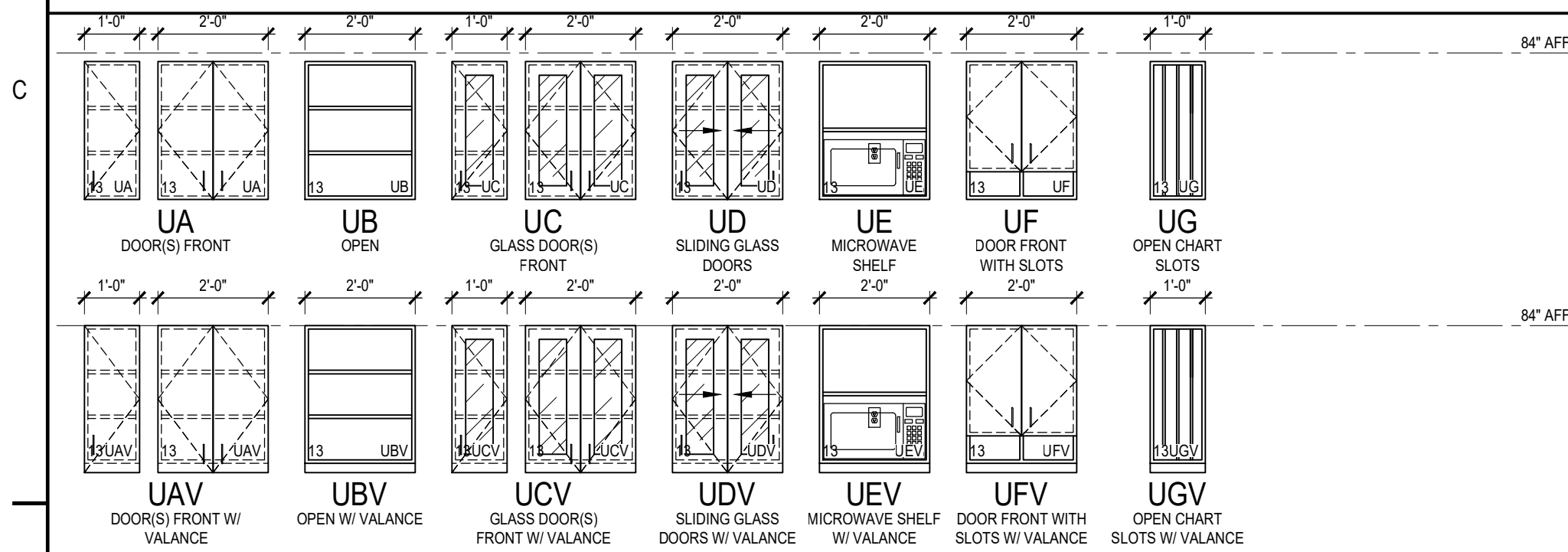
NOTE: CASEWORK SHALL BE CONSTRUCTED OF 3/4" MDF WITH HIGH PRESSURE LAMINATE ON ALL EXPOSED SURFACES AND PVC EDGES. SEMI-EXPOSED SURFACES (INTERIOR OF CABINETS) SHALL BE FINISHED WITH THERMOSET DECORATIVE OVERLAY (MELAMINE). UNEXPOSED SURFACES SHALL BE SEALED WITH AN ACRYLIC SEALER. DETAILS SHALL COMPLY WITH A.W.I. FLUSH OVERLAY CONSTRUCTION FOR PREMIUM GRADE CASEWORK.

NOTE: ALL DIMENSIONS GIVEN ARE NOMINAL.

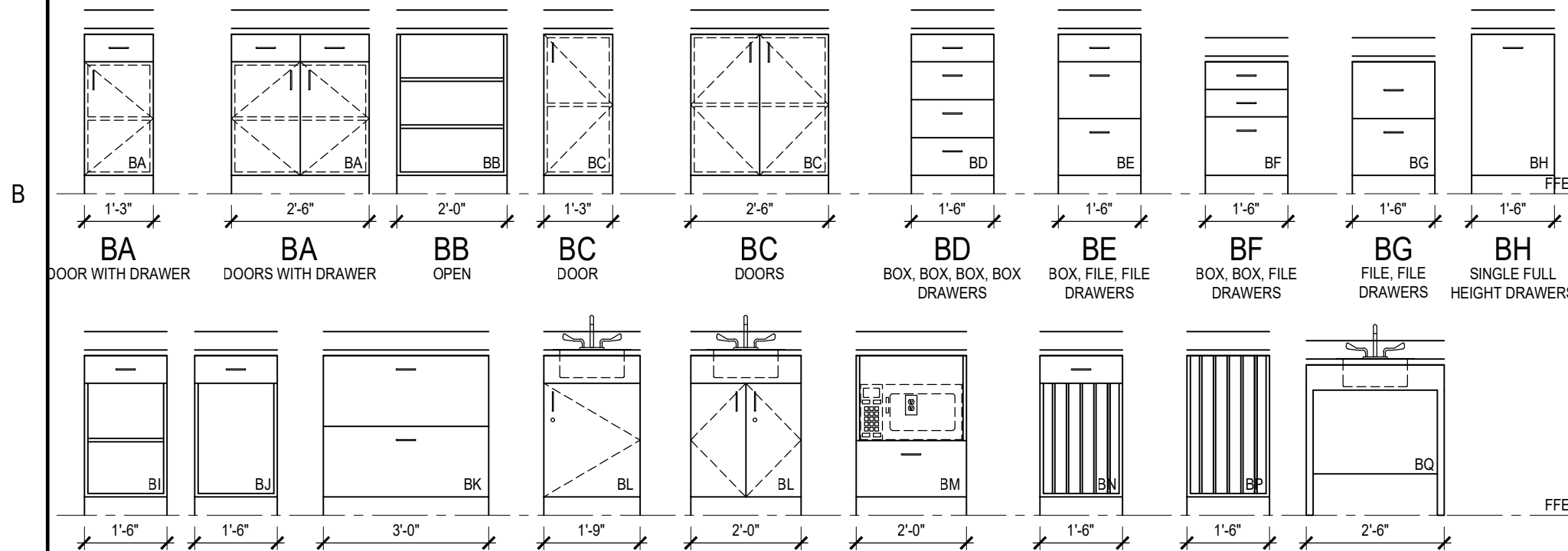


D1 TYPICAL CABINET DIMENSIONS
SCALE: 3/8" = 1'-0"

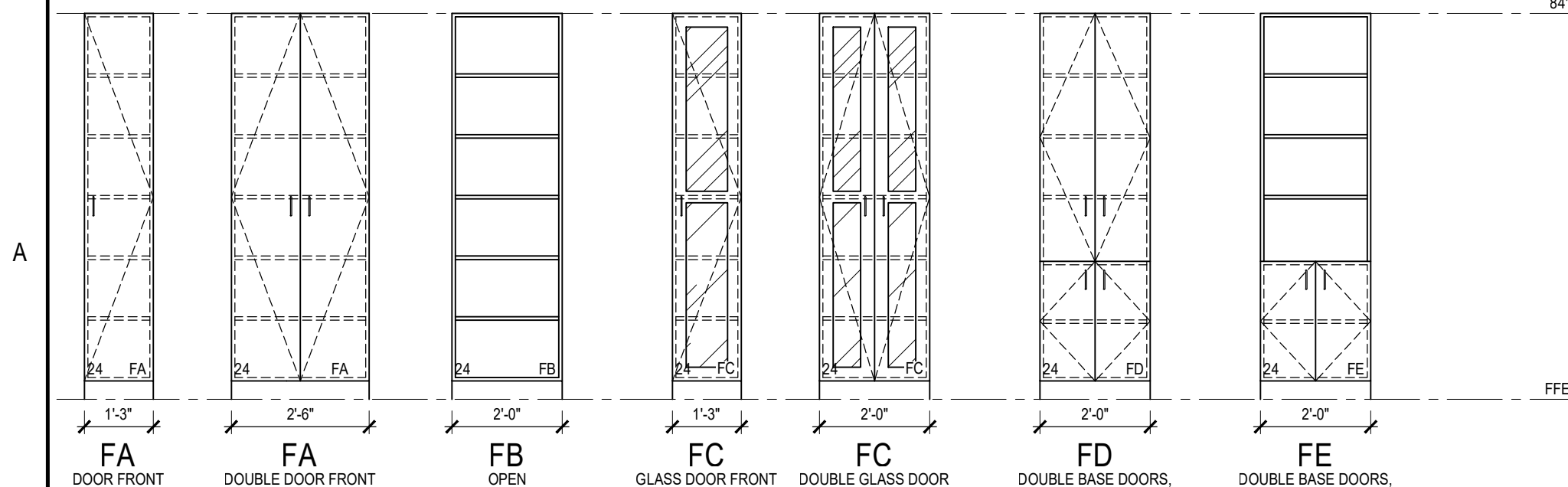
CABINET TYPES



C1 UPPER (WALL) CABINETS
SCALE: 3/8" = 1'-0"



B1 BASE CABINETS
SCALE: 3/8" = 1'-0"



A1 FULL HEIGHT CABINETS
SCALE: 3/8" = 1'-0"

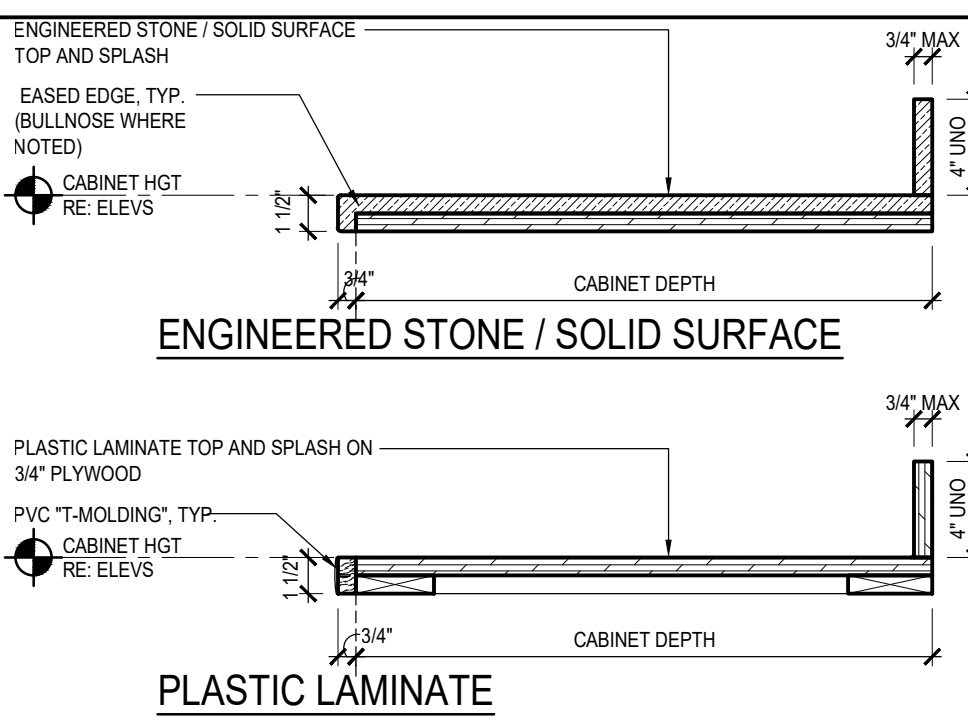
CABINET GENERAL NOTES

- CABINET WIDTHS TO BE BASED ON MODULE INCREMENTS OF 3" UNO.
- PROVIDE FILLER PANELS TO FINISH OUT TO SCRIBE CABINETS TO WALL.
- PROVIDE FINISHED END PANELS END RETURNS AT OPEN ENDED CABINETS, KNEE SPACES, AND ACCESSIBLE SINKS.
- PROVIDE 1 1/2" THICK FINISHED END PANEL AT FREE STANDING END OF ACCESSIBLE SINKS AND KNEE SPACES.
- WHEN FILLER PANELS ARE REQUIRED AT BOTH ENDS OF CASEWORK TERMINATION, BOTH FILLER PANELS SHALL BE EQUAL WIDTH.
- PROVIDE CONCEALED WALL BRACKET SUPPORTS AT 36" OC MAX TO SUPPORT COUNTERTOP AT CONTINUOUS KNEE SPACE. REFER TO TYPICAL CABINET SUPPORT DETAIL THIS SHEET.
- PROVIDE END SPLASH WHEN COUNTERTOP IS ADJACENT TO WALL AT SIDES.
- PROVIDE HOLES FOR GROMMETS IN COUNTERTOPS AND AT THE FOLLOWING LOCATIONS:
 - 1 EACH WIRE ACCESS HOLE WITH GROMMET AT KNEE SPACE.
 - WIRE ACCESS HOLES WITH GROMMETS AT 36" OC FOR CONTINUOUS RUNS OF KNEE SPACE.
 - 1 WIRE ACCESS GROMMET BEHIND EACH KEYBOARD DRAWER.
 - 1 COMPUTER PAPER SLOT GROMMET BEHIND EACH PRINTER.
- PROVIDE ADJUSTABLE SHELVES IN CABINETS AT THE FOLLOWING LOCATIONS UNO ON ELEVATIONS:
 - BASE CABINET - 1 SHELF
 - FULL HEIGHT CABINET - 5 SHELVES, 1 FIXED
 - WALL CABINET - 1 SHELF AT <= 24" HIGH, 2 SHELVES AT TALLER CABINETS
- GLASS FRONTS TO BE 1/4" THICK CLEAR TEMPERED GLASS UNO.
- PROVIDE AN APRON AT ALL KNEE SPACES 30" OR HIGHER UNO.
- REFER TO A2.40 FOR FINISH INFORMATION.

CABINET FINISH NOTES

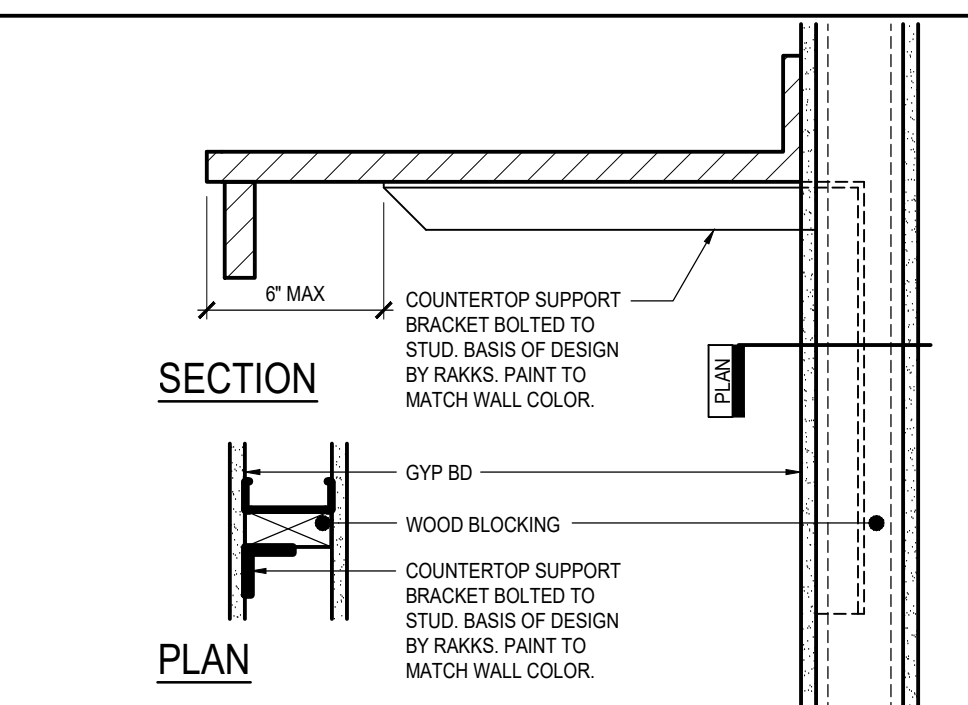
- REFER TO SHEET A6.40 FOR FINISH ABBREVIATIONS AND SPECIFICATION INFORMATION.
- PATTERN NAME, COLOR AND NUMBER FOR EACH MATERIAL ARE GIVEN WHEREVER POSSIBLE. IT SHALL BE THE RESPONSIBILITY OF THE CONTRACTOR TO BRING ANY DISCREPANCIES TO THE ATTENTION OF THE ARCHITECT/DESIGNER SO THAT THE CORRECT MATERIAL IS INSTALLED.
- WOOD GRAIN PATTERN TO RUN VERTICALLY UNLESS NOTED OTHERWISE.
- STANDARD WIRE PULLS UNLESS NOTED OTHERWISE. REFER TO ELEVATIONS FOR LOCATIONS WHERE UPGRADED PULL IS REQUIRED.

TYPICAL COUNTERTOPS

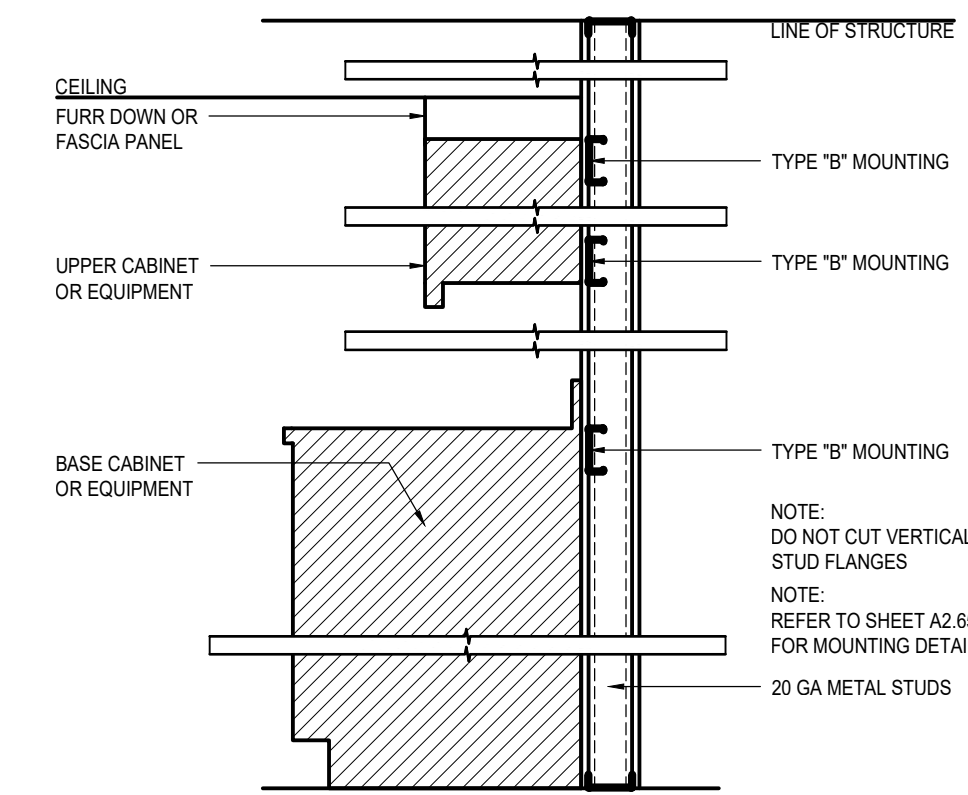


C2 STANDARD COUNTERTOP TYPES
SCALE: 1 1/2" = 1'-0"

TYPICAL CABINET SUPPORT

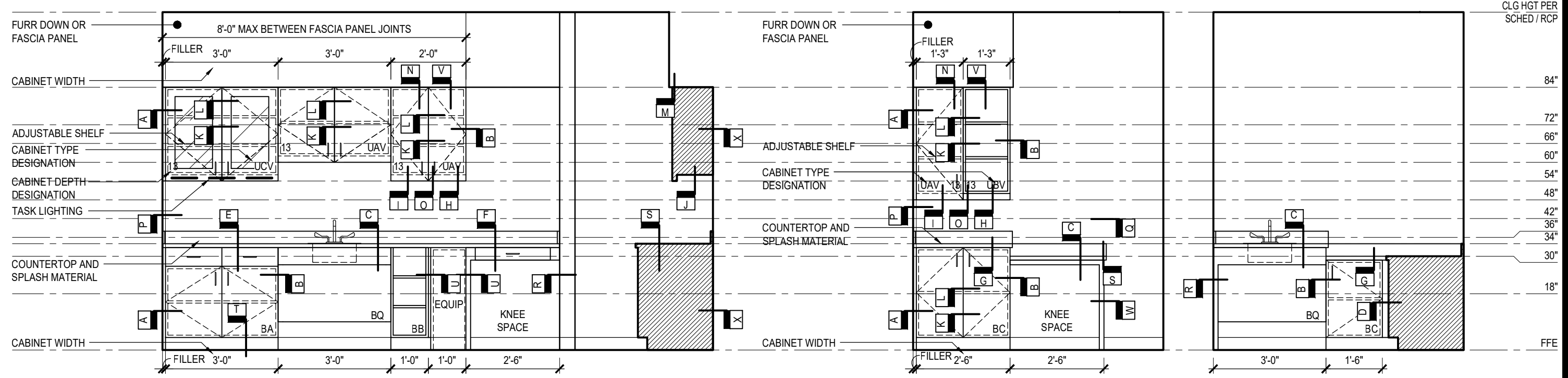


B2 CONCEALED COUNTERTOP SUPPORT
SCALE: 1 1/2" = 1'-0"



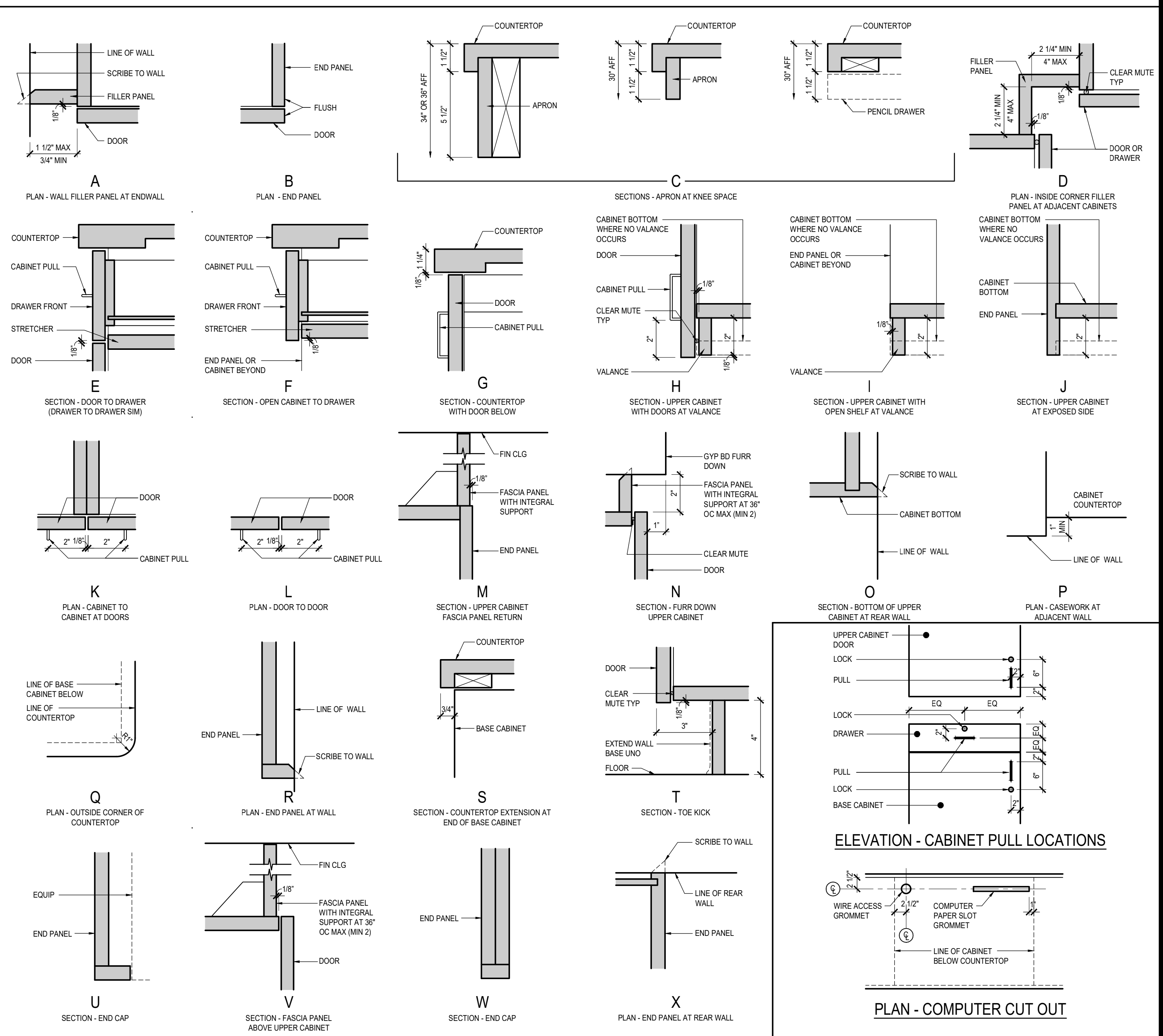
A2 TYP. CABINET SUPPORT WALL
SCALE: 3/4" = 1'-0"

CABINET DETAILS LEGEND



D3 CABINET DETAIL KEYS
SCALE: 3/8" = 1'-0"

TYPICAL CABINET DETAILS



A3 TYPICAL CABINET DETAILS
SCALE: 3" = 1'-0"

A5 TYPICAL CABINET HARDWARE
SCALE: 3/4" = 1'-0"